

# m3connect Equips Landal Travemünde with WiFi via Private LTE

## State-of-the-Art Internet Without Cabling

Landal Travemünde’s guest services have been significantly upgraded with the latest mobile network technology from m3connect. In the past, providing reliable internet access in Landal accommodations was a challenge. Ensuring a sufficiently fast and stable internet connection would have required extensive and costly cabling in each holiday home. m3connect’s innovative mobile technology eliminated the need for costly infrastructure upgrades while delivering a stable and seamless internet connection.

## About Landal and the Technical Challenges of Holiday Parks

The holiday homes at Landal are stylishly furnished and offer ample space for multiple guests. From cozy apartments to luxury villas and accessible holiday homes, there is suitable accommodation for every taste and need. Many of these homes feature private saunas, whirlpools, and fireplaces to provide guests with an exclusive holiday experience.

In addition to modern accommodations and efficient service, guests also expect fast and reliable internet access during their stay at the holiday park. This, however, often poses a problem for holiday parks and campsites. These facilities are typically located in rural areas, or their buildings

were constructed at a time when the necessary technical cabling was not considered.

The lack of a stable internet connection in these holiday parks is becoming a significant challenge, especially in the digital age. Often, park operators must offer lower rental prices to compensate for weak internet connections, in order to maintain attractive packages for guests. Alternatively, they could opt to retrofit the park with new cabling, but this option involves high costs, significant effort, and operational downtime.

For this reason, Landal GreenParks, the holiday home specialist, chose m3connect’s private 5G network to provide reliable internet access to their guests without the need for extensive cabling.

## The m3connect solution: Private 5G network

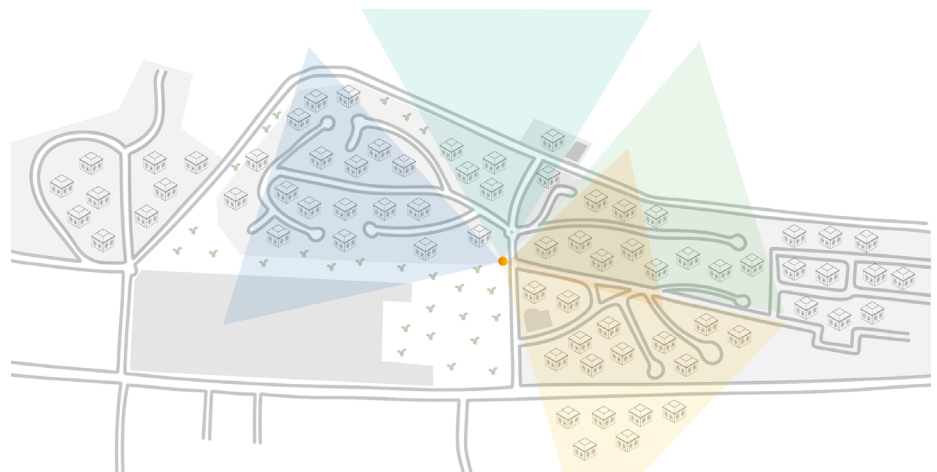
For over 20 years, m3connect has established itself as a technological leader in WiFi and holiday park technology solutions. They have developed

a custom system that can be implemented without disrupting operations. This system guarantees a stable and fast internet connection, even in areas with insufficient cabling and weak mobile reception. The solution utilizes a private mobile network as a foundation for comprehensive WiFi coverage, easily connecting multiple WiFi access points to provide internet to every holiday home and guest device.

This innovative system provides holiday park and campsite operators with a cost-effective solution for delivering fast, stable internet to their facilities without high costs, lengthy installation, or operational restrictions—regardless of the existing cabling or network quality.

## Private 5G Network Benefits at a Glance:

- Simple and cost-effective internet connectivity for holiday homes without the need for cabling
- Freely accessible WiFi hotspots throughout the park



© m3connect  
Landal Travemünde mobile campus network coverage

# m3connect Equips Landal Travemünde with WiFi via Private LTE

Cutting-edge technology: private (4G or 5G) mobile network for WiFi connectivity

- Connectivity to remote parts of the park (beach bars, beach chair rentals, parking lots, playgrounds, mountain stations, etc.)
- Unlimited data usage with no volume restrictions
- Independence from public mobile networks

## The m3connect Solution at Landal Travemünde and Novasol

For the fast and reliable internet connection at the holiday park, m3connect collaborated with Landal GreenParks and installed a private LTE network. Four LTE antennas were set up on a 9-meter mast to ensure quality network coverage. The internet connection from the reception to the mast was established via directional radio, with the reception area also equipped with office WiFi to support staff operations.

To provide guests with mobile and fast internet access, each house was fitted with a pLTE receiver and a WiFi access point. This setup gives guests their own dedicated WiFi network in each home, available for unrestricted use at any time. With individual log-ins, guests can enjoy uninterrupted internet connectivity throughout the park and outside their houses, seamlessly roaming from one access point to another. The data center is housed in an outdoor server cabinet directly next to the antenna mast. The entire

installation was carried out without disrupting guests in the park.

## Landal Today: A Modern Holiday Park with m3connect's Private 5G Network

The project was successfully completed in November 2021. With m3connect's internet connection, guests at the holiday park can now enjoy free WiFi on-site, enhancing their holiday experience. Reliable and fast communication, uninterrupted use of social media, and streaming movies are now the standard at Landal Travemünde – amenities that both guests and operators consider indispensable.

Considering the growing trend of remote work, where employees can work from anywhere, a stable internet connection is crucial.



Landal has adapted to these changes and now offers guests a reliable internet connection, enabling them to work without interruptions while also enjoying their leisure time. The combination of productive work and relaxation in a cozy environment makes Landal a popular destination for business travelers who rely on a stable internet connection while away from home.

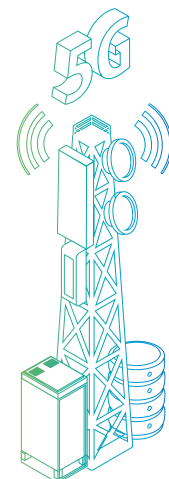
## About the collaboration

According to Landal, open communication from m3connect was key to the project's success:

*"We are delighted to be able to use such modern technology in the park. The collaboration with m3connect was very pleasant and effective throughout the entire process. We particularly appreciate the excellent communication and professional, transparent advice."*

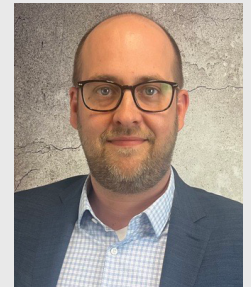
– John Schotmann, Facility Manager at Landal GreenParks

With an area of 120,000m<sup>2</sup> and a data volume of 4TB per week, m3connect's Private 5G network is one of the largest and most productive in Germany. The potential of private 5G networks extends far beyond holiday parks and campsites. This versatile solution can be applied to various other areas, opening up exciting possibilities for the future. Golf courses, festival grounds, racetracks, and other facilities may soon benefit from this cost-effective solution for stable high-speed internet.



## m3connect Equips Landal Travemünde with WiFi via Private LTE

Are you looking for a reliable and innovative partner for the future-proof networking of your locations? If so, feel free to contact us!



m3connect GmbH

**Sascha Hoch**

Pascalstraße 18

52076 Aachen, Germany

Tel.: +49 241 980 986-118

[s.hoch@m3connect.de](mailto:s.hoch@m3connect.de)

[www.m3connect.de](http://www.m3connect.de)



### From WiFi Pioneer to Market Leader

Since 2001, m3connect has grown into one of the largest Wireless Internet Service Providers in Europe, with offices in Aachen, Karlsruhe, Munich, San Francisco, the United Arab Emirates, and Šibenik (Croatia). Globally, m3connect serves approximately 17,000 customer locations across more than 27 countries and has been expanding its self-developed platform as a pioneer in cloud technologies for over 20 years. As a technology leader, m3connect provides wireless best-in-class internet connectivity with flexible design. m3connect utilizes state-of-the-art technologies such as WiFi, private LTE, and 5G, and creates innovative software solutions like SD-WAN and various digital applications. The service portfolio includes digital signage, guest infotainment systems, VoIP, VoD, and location-based services.

m3connect is a platform developer and integrates its solutions into the existing processes of its customers.

